



Proof of Concept Study **Agent Based Modeling:** **Investigating Indigenous Health** **Impacts of Flooding**

Lalita Bharadwaj, PhD.
University of Saskatchewan
GWF Inception Meeting
January 22-23 2018

INTRODUCTION

LOG IN



CE

Hor

Hor

'It

tc

Ove

By Tim



Peguis Chief Glenn Hudson says the federal government spends more money responding to floods than it does on finding long-term solutions. (Glenn Hudson)

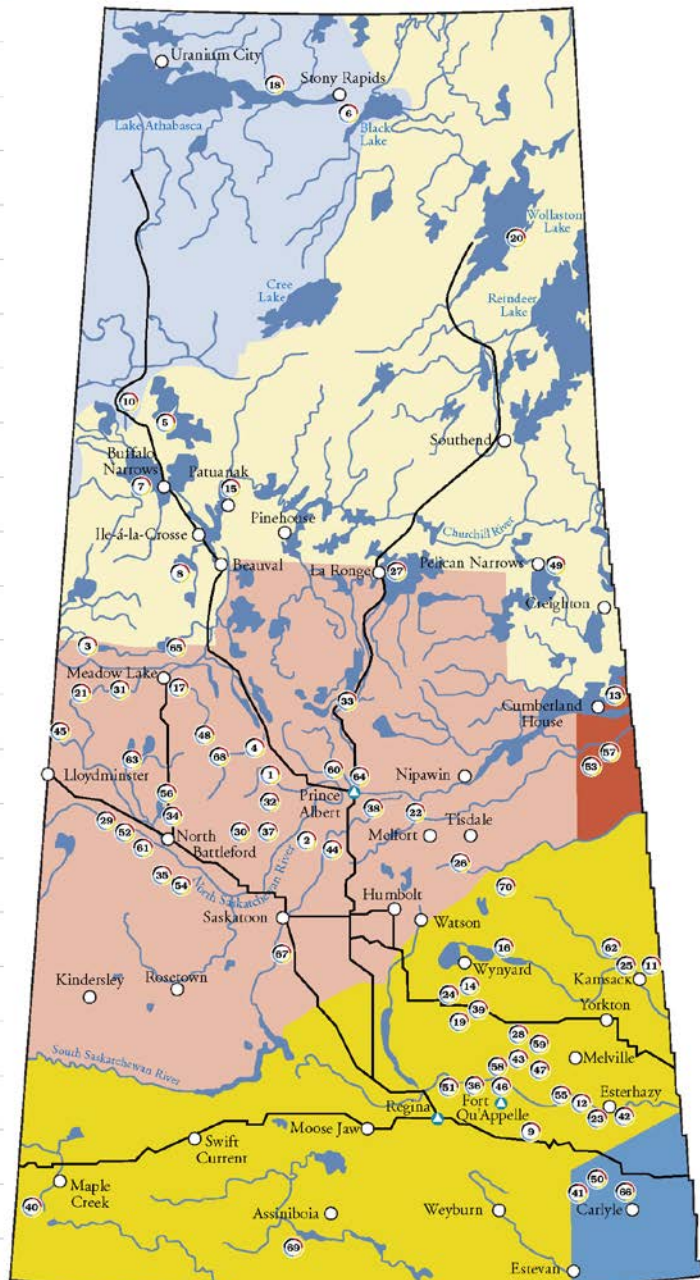


Objectives

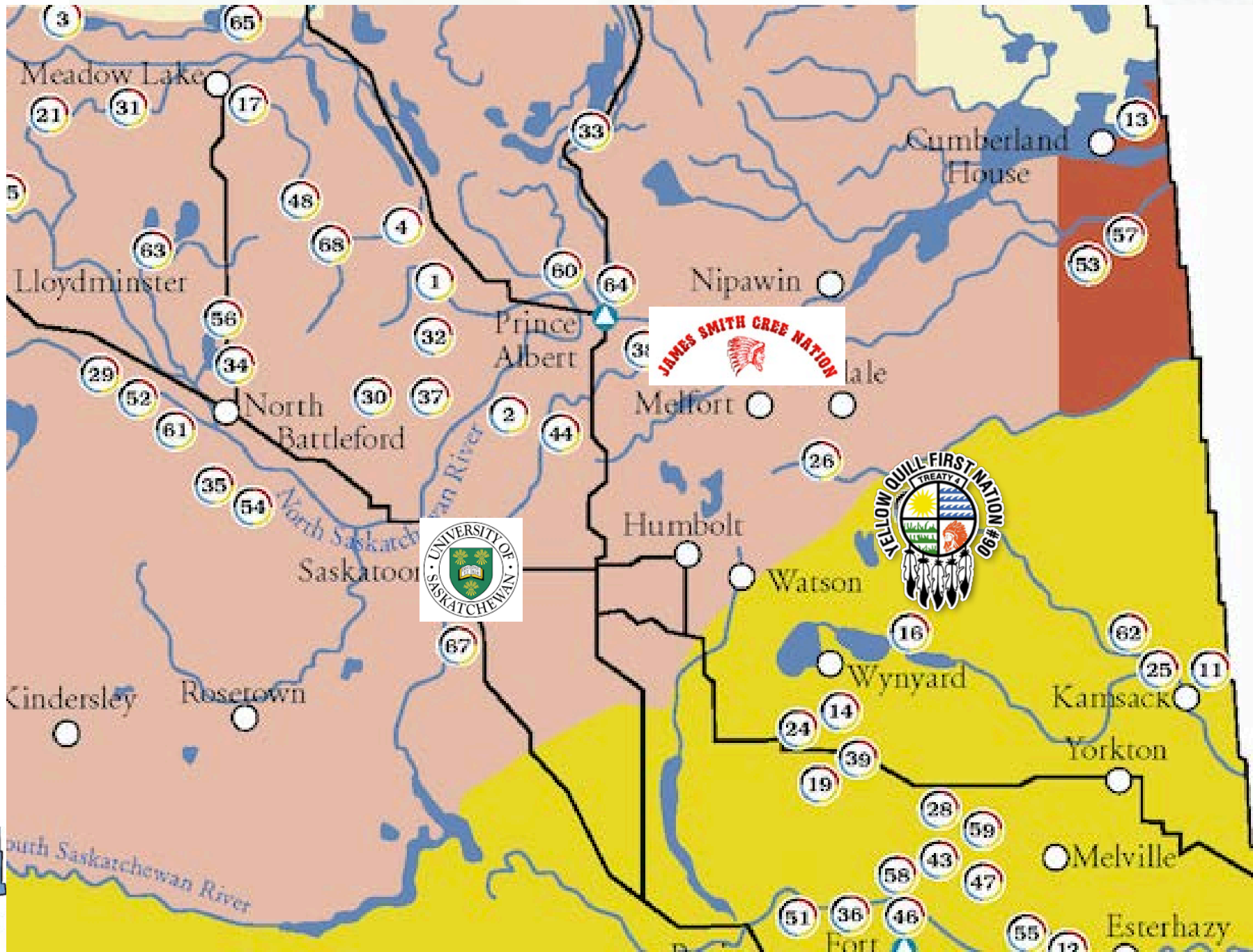
- **Co-Create a Model Framework to:**
 - Examine health effects of floods with Indigenous Communities
 - Demonstrate capability for evaluating and supporting health services, emergency planning and management
 - Feasibility for adaptation with other reserve communities and water threats

A B C D E F G H I J K L M

1
2
3
4
5
6
7
8
9
10
11
12
13
14
15
16
17
18
19
20
21
22
23
24



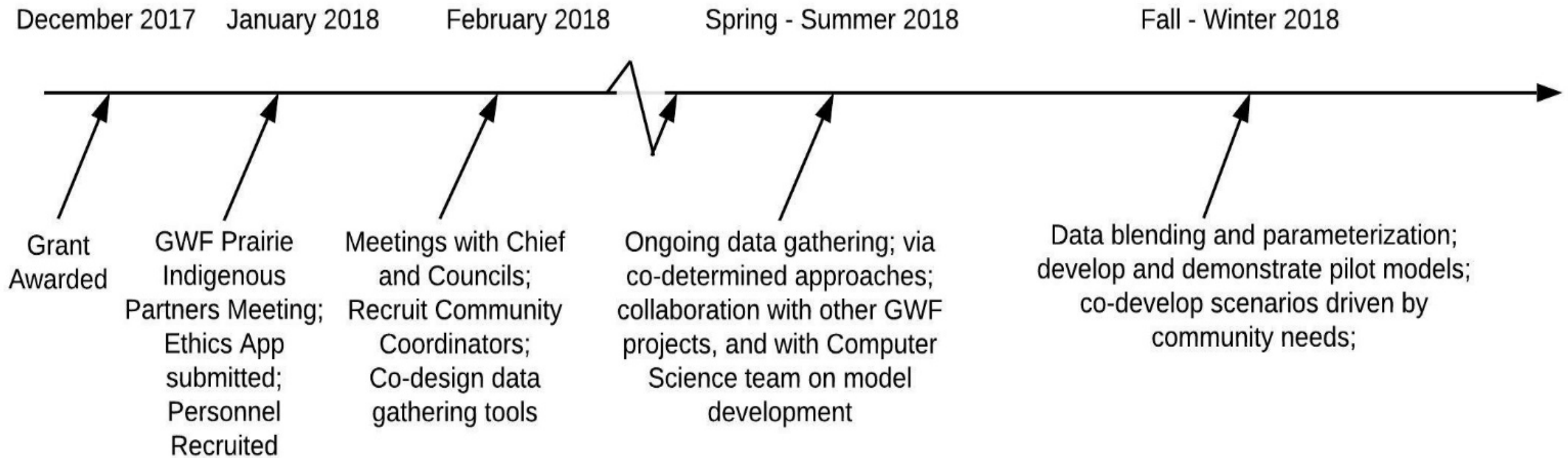
A B C D E F G H I J K L M



Our Team



Progress:



Collaborations

- Core Modeling Team and Prairie Water
 - Prairie Hydrology
- Prairie Water Governance Subtheme Team
 - Emergency Management and Policy
- Federation of Sovereign Indigenous Nations
 - Policy Review, Flooding Records and Data

CORE NEEDS AND CONTRIBUTIONS TO CORE

• **NEEDS:**

- Computer Science/Data Management/Core Modeling Team
- Knowledge Mobilization

• **CONTRIBUTIONS:**

- Knowledge Mobilization Tool
- Potential for transfer/scale-up across GWF project partnered communities.

Questions?

