

Linking River Network Process Models



to Robust Adaptive Data Management Systems

Partners

Researchers

- Bruce MacVicar, Civil and Environmental Engineering, UW
- Don Cowan, Computer Science, UW
- Paulo Alencar, Computer Science, UW
- Stephen Murphy, Environment, UW
- Simon Courtenay, Environment, UW

Industry and Government

- Matrix Solutions
- Water's Edge
- Toronto and Region Conservation
- Grand River Conservation
- Credit River Conservation
- Stream Management and Research Team (SMART) networks

Geospatial Analysis

Monitoring

Modelling

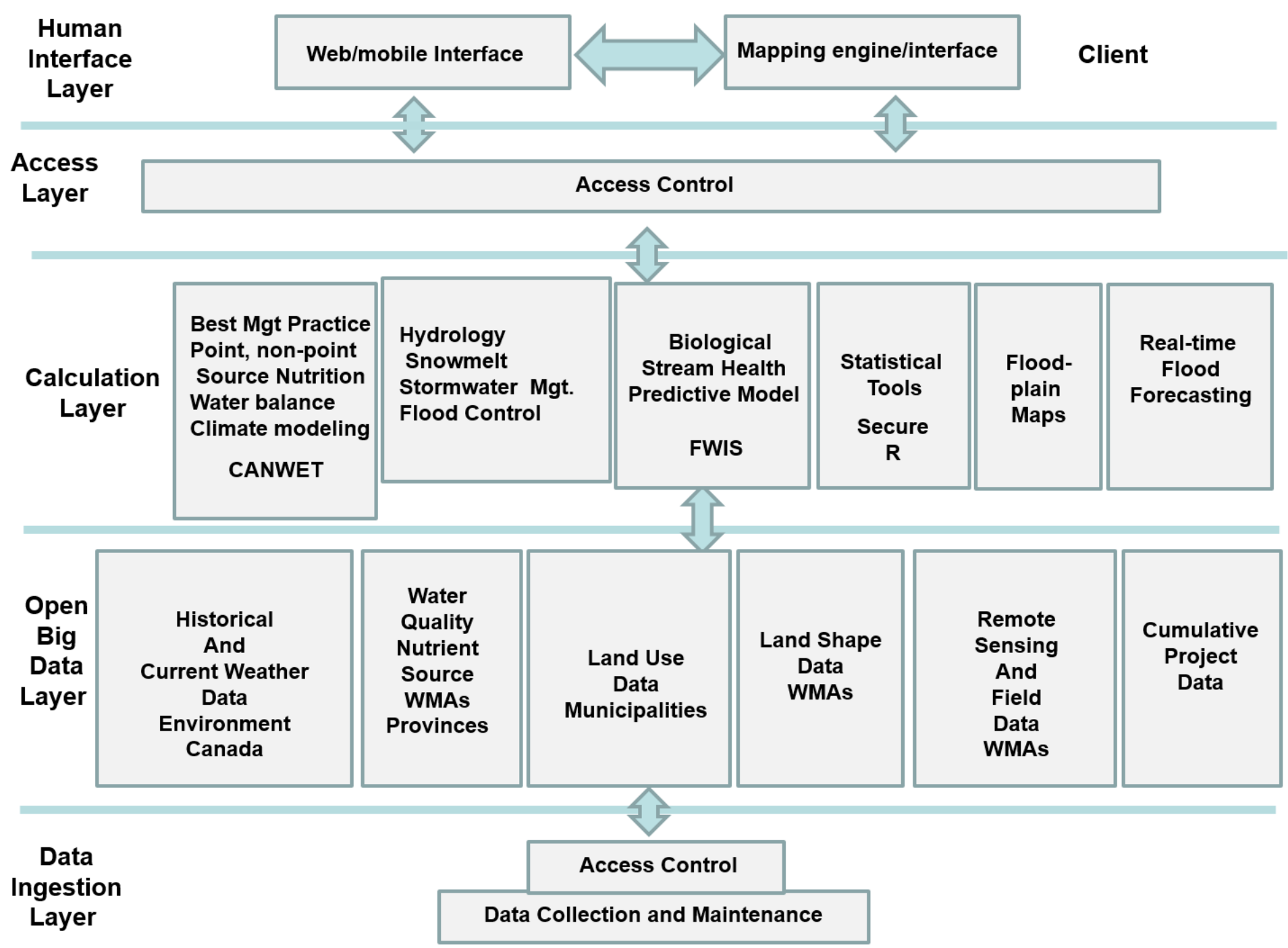
Geospatial Analysis

iEnvironment

Monitoring

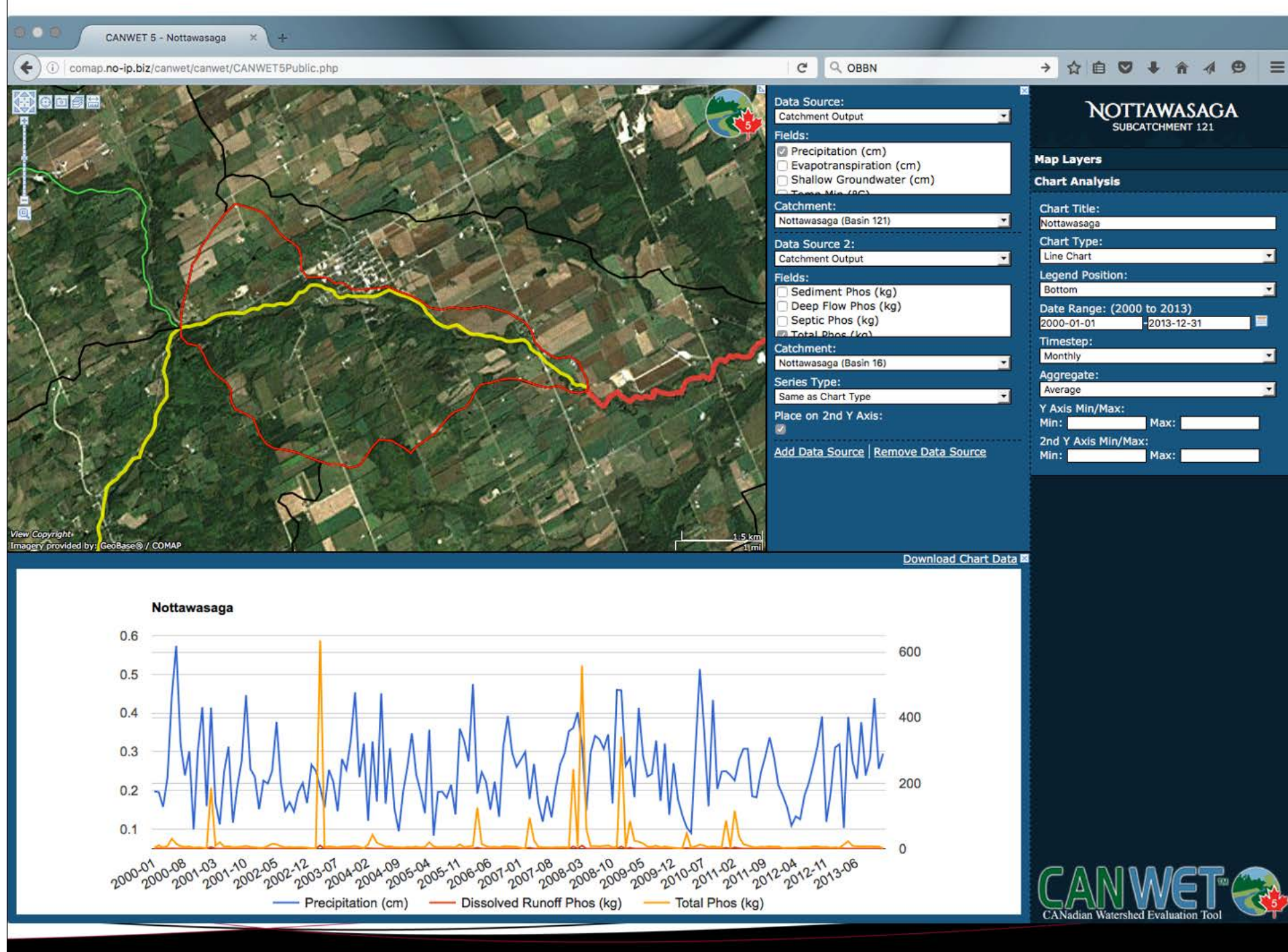
Modelling

iEnvironment



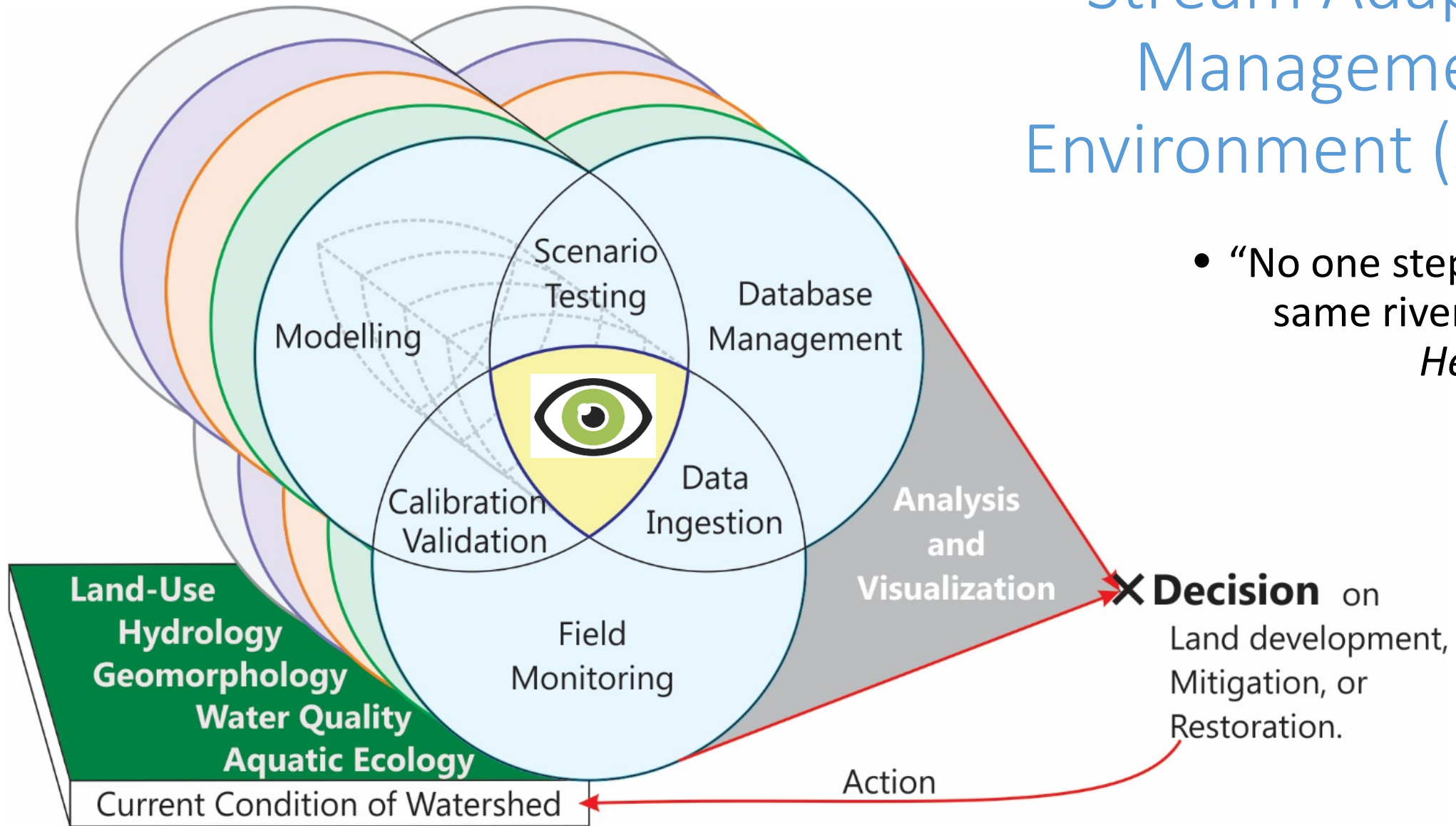
Continued development funded through CANARIE

CANWET



Stream Adaptive Management Environment (SAME)

- “No one steps in the same river twice.”
Heralticus



Road Map

1. Hire team of Ph.D. students (4) to work on SAME (now)
2. Form a strategic advisory committee with the partners (now)
3. Develop analysis, visualization, and process capturing tools to expand capability of iEnvironment (~ 2 years)
4. Build SAME systems for pilot watersheds to support land-use decision making in Southern Ontario (~3 years)
5. Scale it up to work with broader Global Water Futures initiatives (~7 years)