



Everyone has a role to play in KnoMo

Graham Strickert

Assistant Professor, School of Environment and Sustainability

Community-Engaged Social Scientist

September 15th, 2017

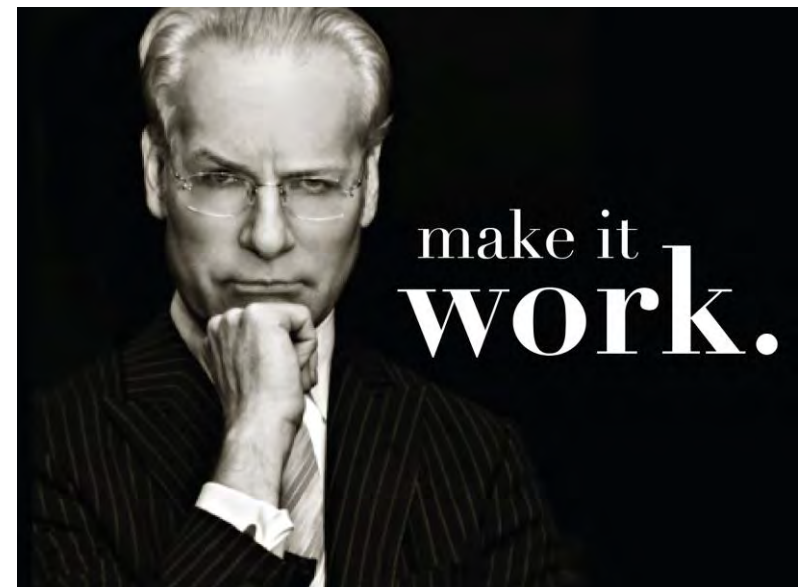
Social Science

- What values matter?



Integrated Modeling Program Canada

- What makes Knowledge Mobilization work?
- Some examples that worked, but need modeling
- Work plan for Integrated Modeling Program Canada



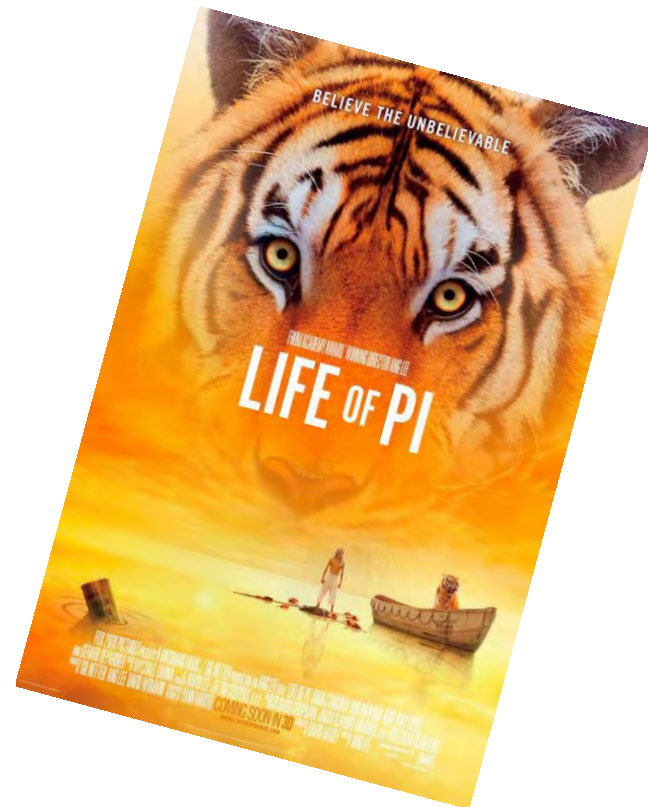
Knowledge Mobilization Depends on:

- Well established relationships
- Regular interaction
- Multi-way communication
- Accessibility
- Responsiveness
- Iterations
- TRUST is earned!!!



Models are stories

- The best stories connect with an audience
- The best stories keep people reading
- The best have uncertainty



A brief history of connecting with communities

- Water Security Workshops
- Invitational Drought Tournament
- Experimental Mobile Decision Lab
- Downstream: Performing Perspectives
- Delta-Dialogue Network
- Delta Ways Remembered
- Building Bridges Delta Display
- Becoming Water

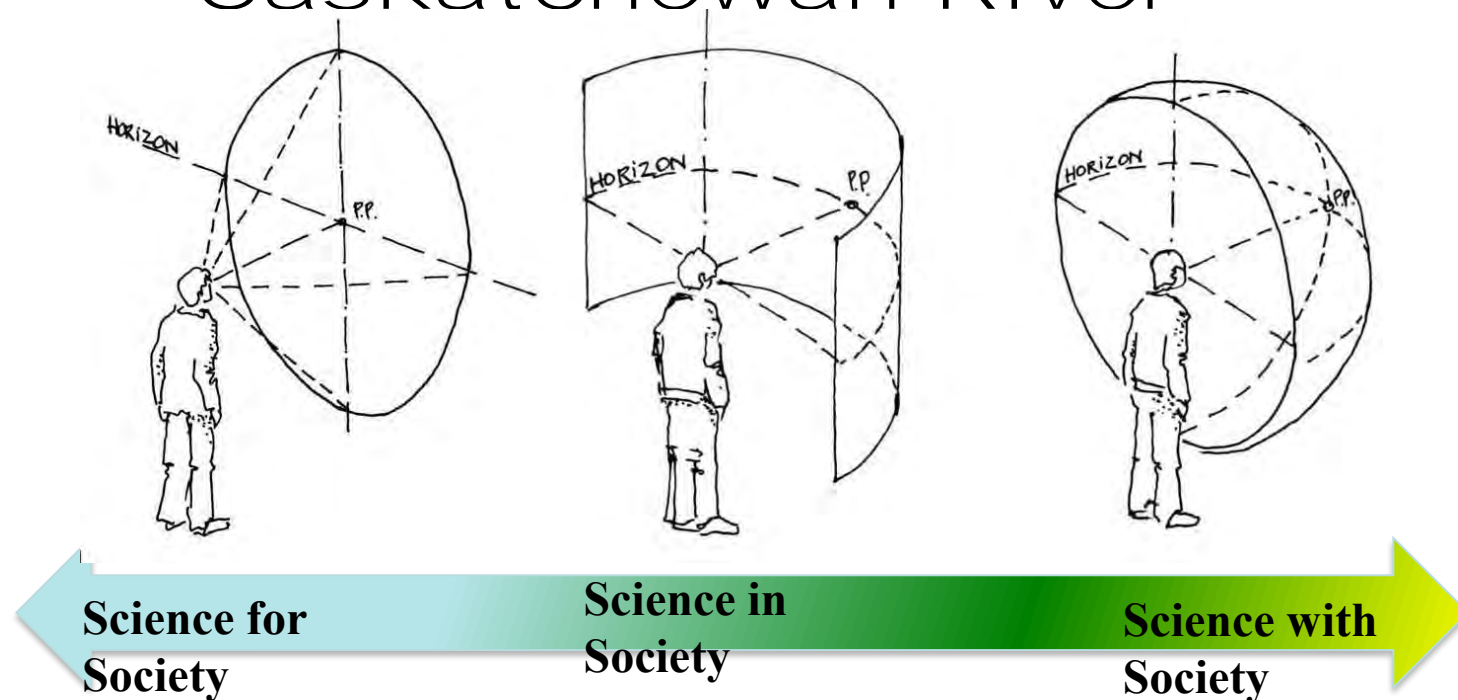


Water security in the SRB



Defining Water Security for the Saskatchewan River Basin

A collaborative approach to understanding water security in the Saskatchewan River Basin



Gober, P. A., Strickert, G. E., Clark, D. A., Chun, K. P., Payton, D., & Bruce, K. (2015). Divergent perspectives on water security: bridging the policy debate. *The Professional Geographer*, 67(1), 62-71.

Five Perspectives

Water for all users, and for all time

Water for people ecosystems and economy

Water supply that is reliable

Water for drinking and for animals

Water supply is limited, get used to it



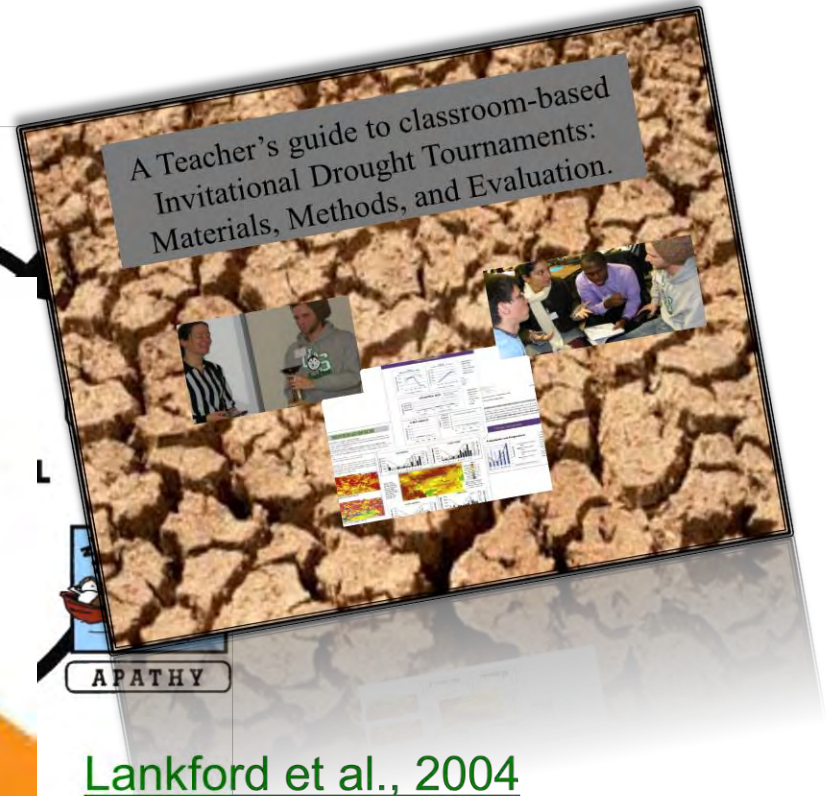
Connecting Science to Communities w Art



17

Strickert, G.E., & Bradford, L.E. (2015) Of Pings and Pongs: On Forum Theatre for Knowledge Mobilization. *International Journal of Qualitative Methodology*. (Accepted July 2nd, 2015)

Invitational Drought Tournament




Lankford et al., 2004

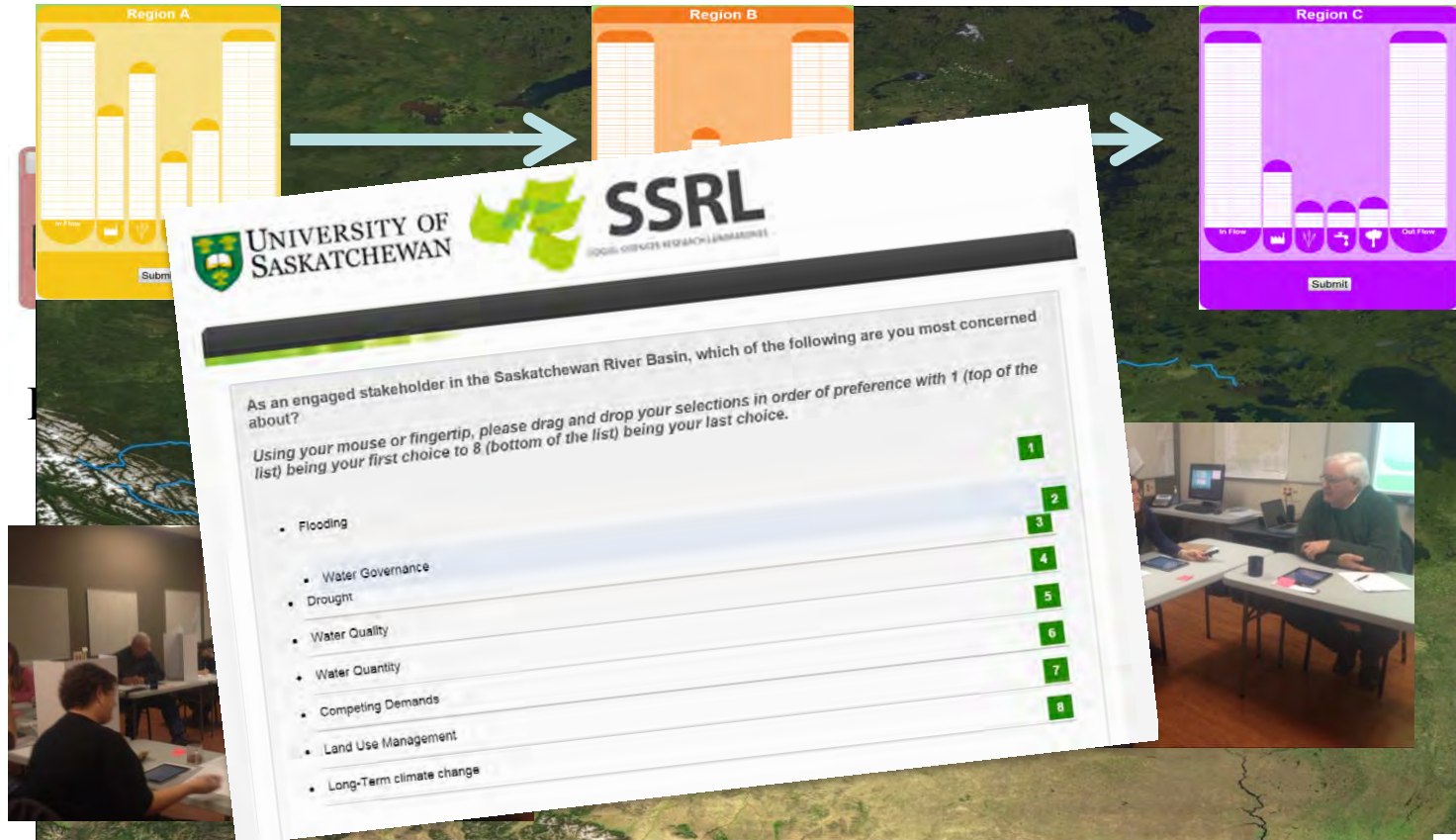
Hill, H., Hadarits, M., Rieger, R., Strickert, G., Davies, E. G., & Strobbe, K. M. (2014). The Invitational Drought Tournament: What is it and why is it a useful tool for drought preparedness and adaptation?. *Weather and Climate Extremes*, 3, 107-116.

Strickert, G.E.H. & Jardim  Agriculture and Agri-Food Canada to the Invitational Drought Tournament. Prepared for Agriculture and Agri-Food Canada. (153 Pages).

Strickert, G.E.H., and Bradford, L. (2013) A Report on the Dimensions of Decisions Making in the Invitational Drought Tournament and the Customizable Invitational Extremes Tournament. Completed at the request of Agriculture and AgriFood Canada – Science and Technology Branch (65 Pages).

 +100

Facilitating Empathy for Water Security



Region A

Region B

Region C

UNIVERSITY OF SASKATCHEWAN

SSRL

As an engaged stakeholder in the Saskatchewan River Basin, which of the following are you most concerned about?

Using your mouse or fingertip, please drag and drop your selections in order of preference with 1 (top of the list) being your first choice to 8 (bottom of the list) being your last choice.

- Flooding
- Water Governance
- Drought
- Water Quality
- Water Quantity
- Competing Demands
- Land Use Management
- Long-Term climate change

1 2 3 4 5 6 7 8



Policy Experiments







**Bring back nature's flow—
Restore our deltas' rhythms**

Building Bridges Display – Delta Display



A photograph of three people wading in a river. They are wearing waders and are looking down at something in the water. The background shows a line of bare trees and a clear sky.

Becoming Water: *Art and Science in Conversation*

Instructors: Susan Shantz • Graham Strickert

Course Participants: Ali Ahmed • Jenelle Dreaver • Kelsey Ford • Hillary Kirk • William Lee
Linda Muižniece • Qiming Sun • Zoë Schneider • Negar Tajgardan • Marie Webster • Emily Zdunich

Work Plan Vision

- Build common language(s) through dialogue
 - IMPC describe models in clear language
 - IMPC outline who their audiences are for each model
 - Prototype models with user communities
 - Understand how stakeholders interact and learn
-
- Continue Engagement with Delta Communities, Water and Land Stewardship Groups
 - Connect values & behaviors and future options
 - CO-CREATE models that matter